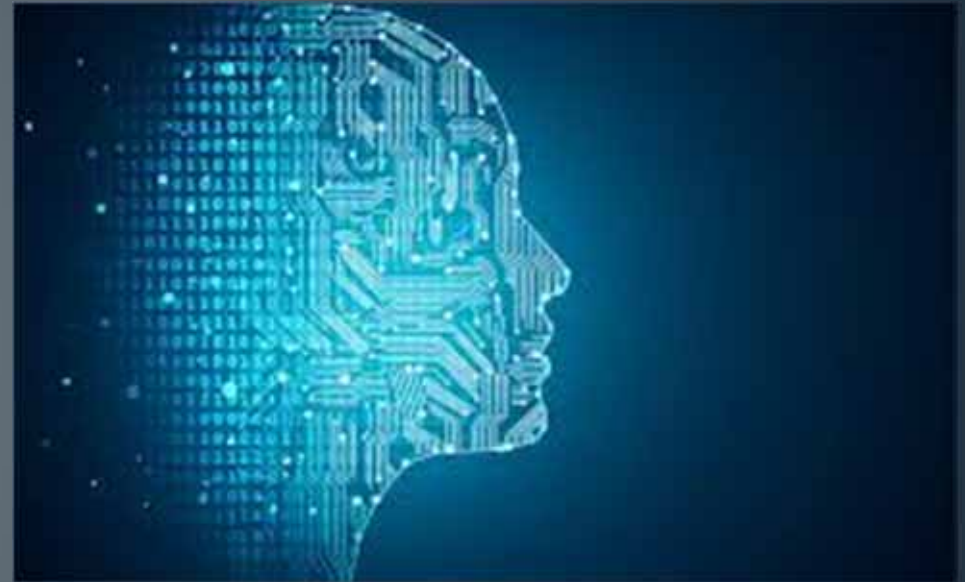
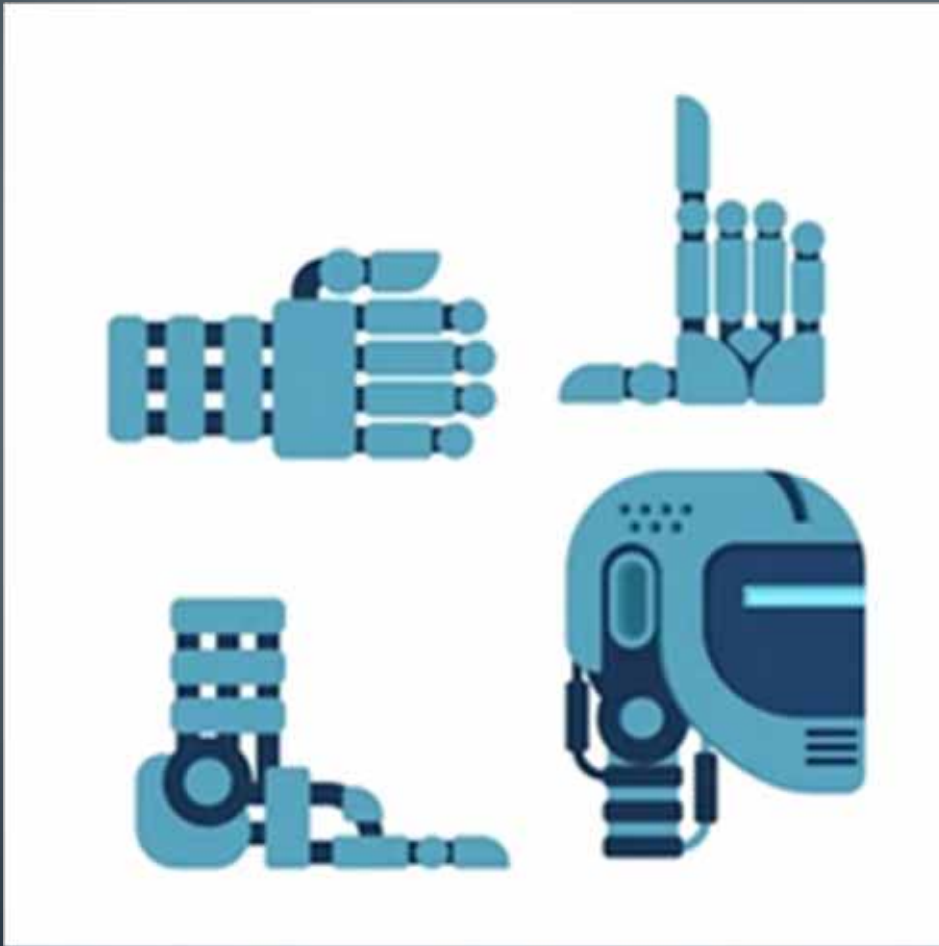


# ARTIFICIAL LIMBS

BY R BEGUM

# Artificial limbs



## Advantages

- Many will find it easier to move and have access to places especially older buildings where wheelchairs are not accessible to use.
- People will have a sense of normality and feel more confident and 'normal' that they fit in with others.
- People e.g. athletes will be more active and will be able to carry out activities they love.

## Disadvantages

- It's a costly price which many may not be able to afford. Some may find artificial limbs unstable and suffer from poor balance if they are not used to the artificial limb.
- It can cause irritation and pain.

# Ethical issues

- Will you feel safe all the time with your limb?

I feel like I can rely on my limb at all time.

I disagree; I have to be cautious with every step I take

- Will you blame all injuries and pain on your artificial limb?

# THE END

